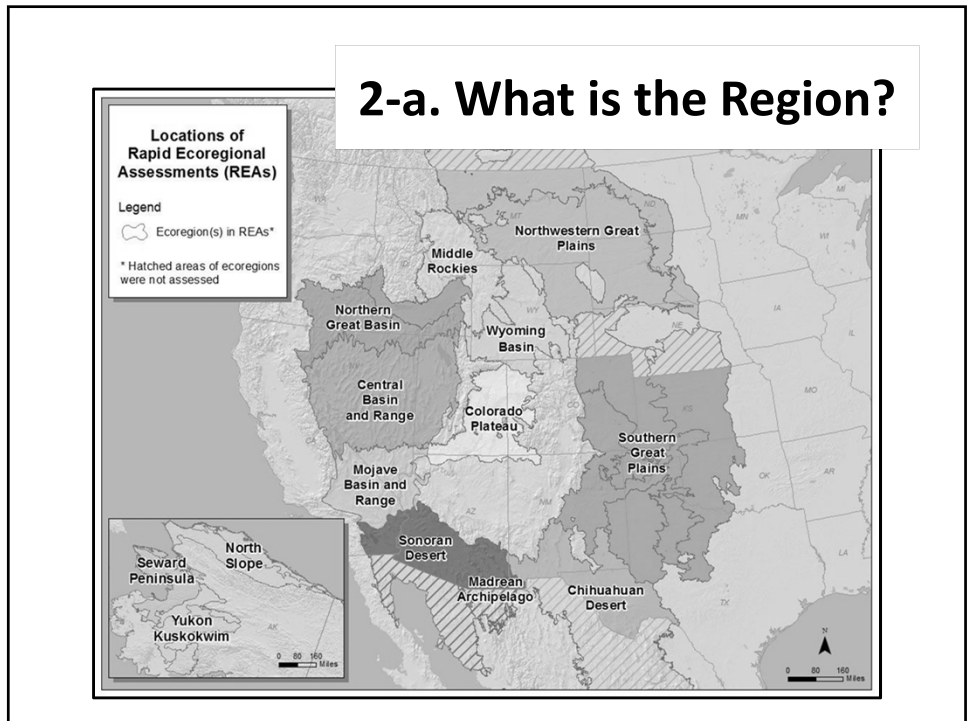
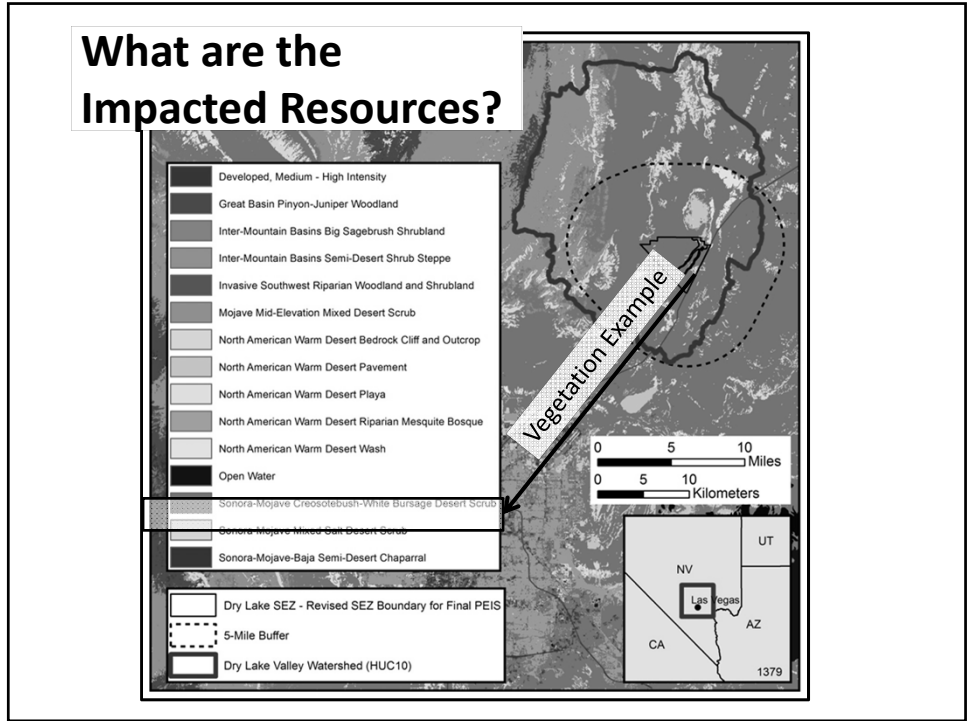


Regional Mitigation Implementation Tools

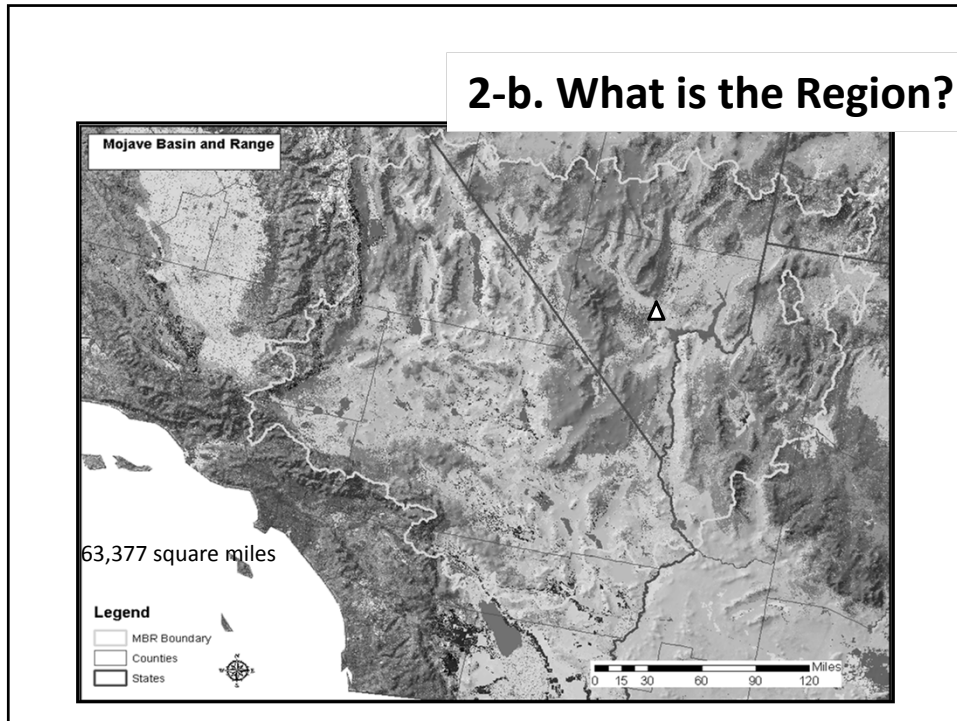
Gordon Toevs
gtoevs@blm.gov

Regional Mitigation Questions

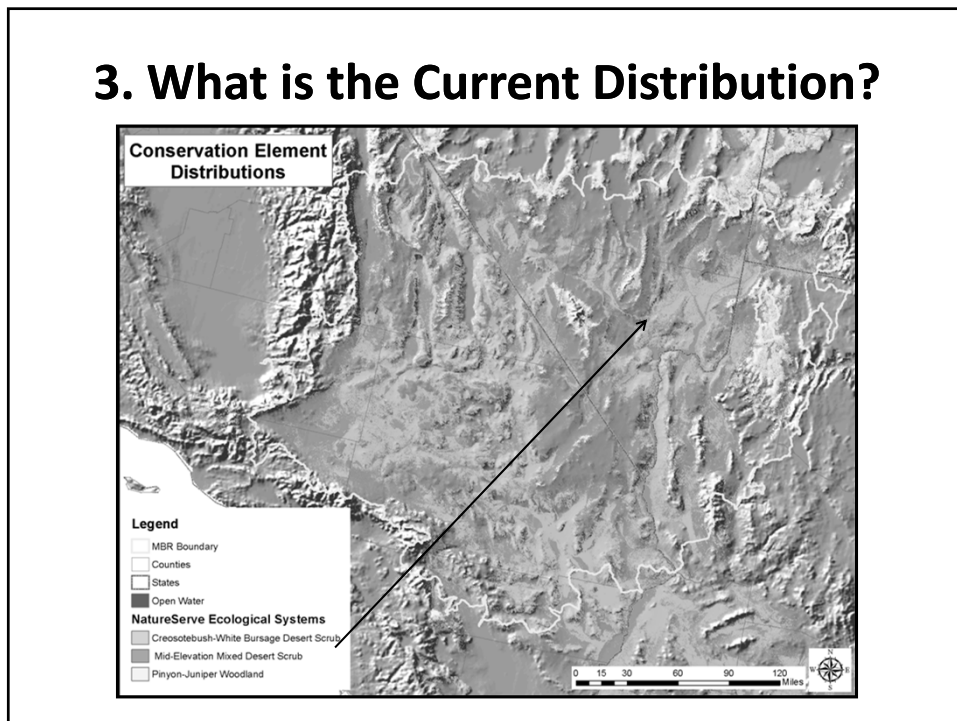
1. What are the impacted resources?
2. What is the region (vegetation, wildlife, water)?
3. What is the current distribution?
4. What are the risks (change agents)?
5. What is the resilience in light of change?
6. What is the relative importance (rarity, to sustain ecosystem processes)?
7. Where are potential mitigation areas?
8. Were the mitigation actions effective (individually and collectively)?



2-b. What is the Region?



3. What is the Current Distribution?

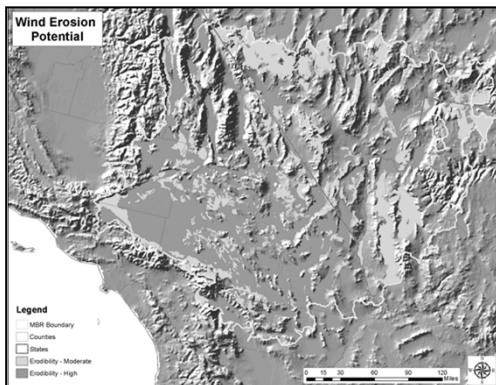


Regional Mitigation Questions

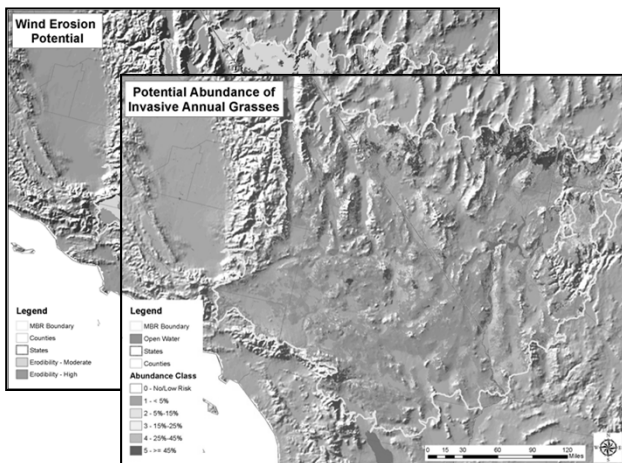
1. What are the impacted resources?
2. What is the region (vegetation, wildlife, water)?
3. What is the current distribution?
- 4. What are the risks (change agents)?**
5. What is the resilience in light of change?
6. What is the relative importance (rarity, to sustain ecosystem processes)?
7. Where are potential mitigation areas?
8. Were the actions effective (individually and collectively)?

4. What are the Risks?

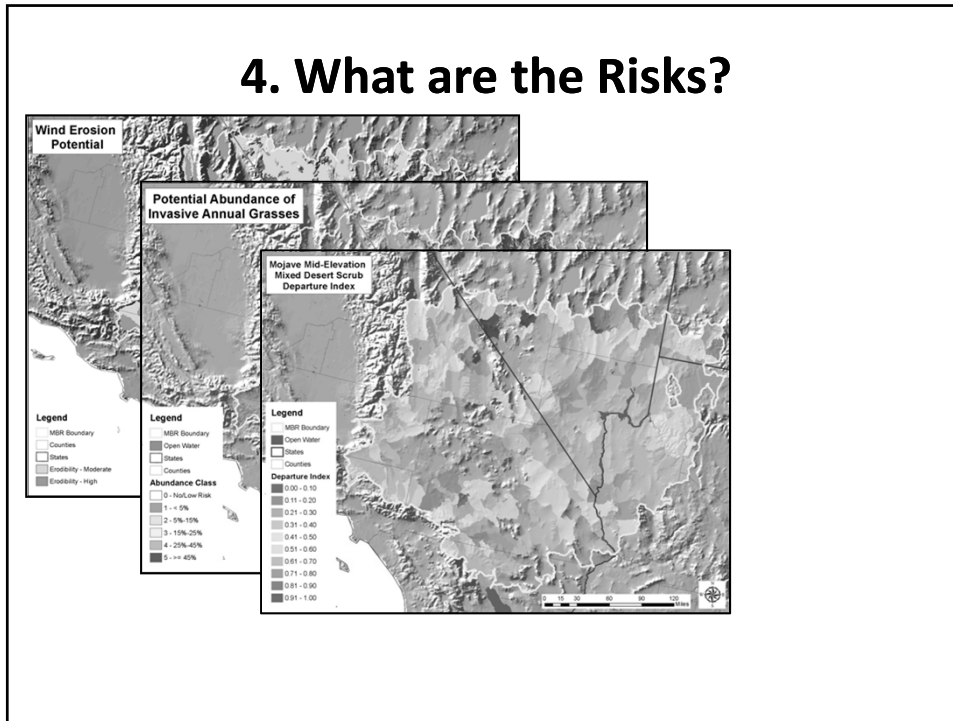
4. What are the Risks?



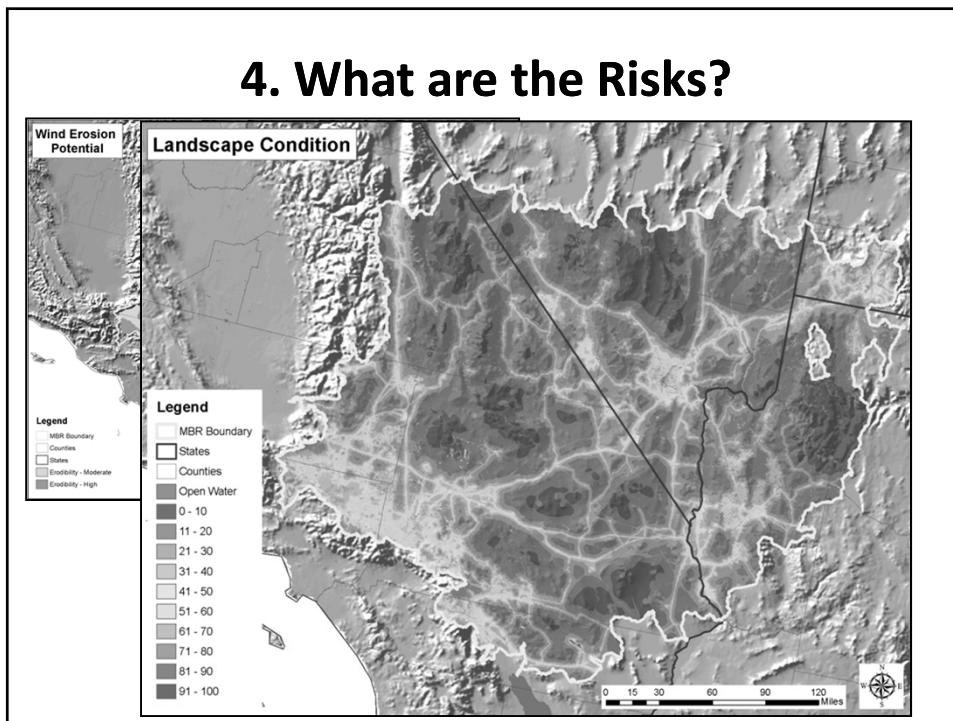
4. What are the Risks?



4. What are the Risks?

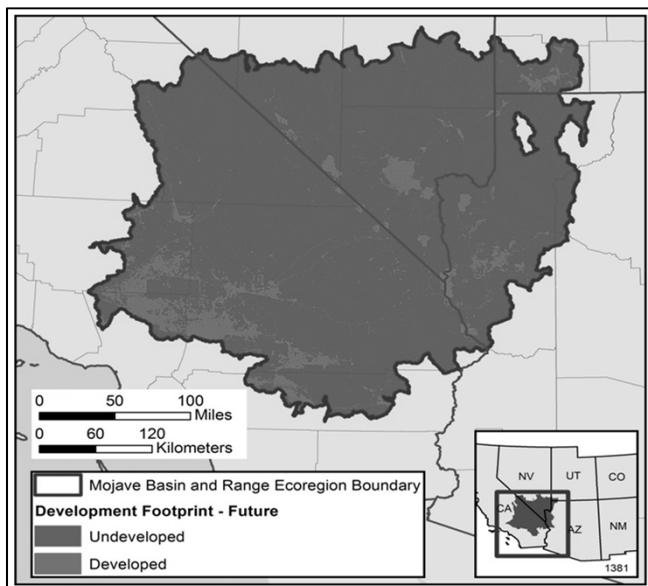


4. What are the Risks?

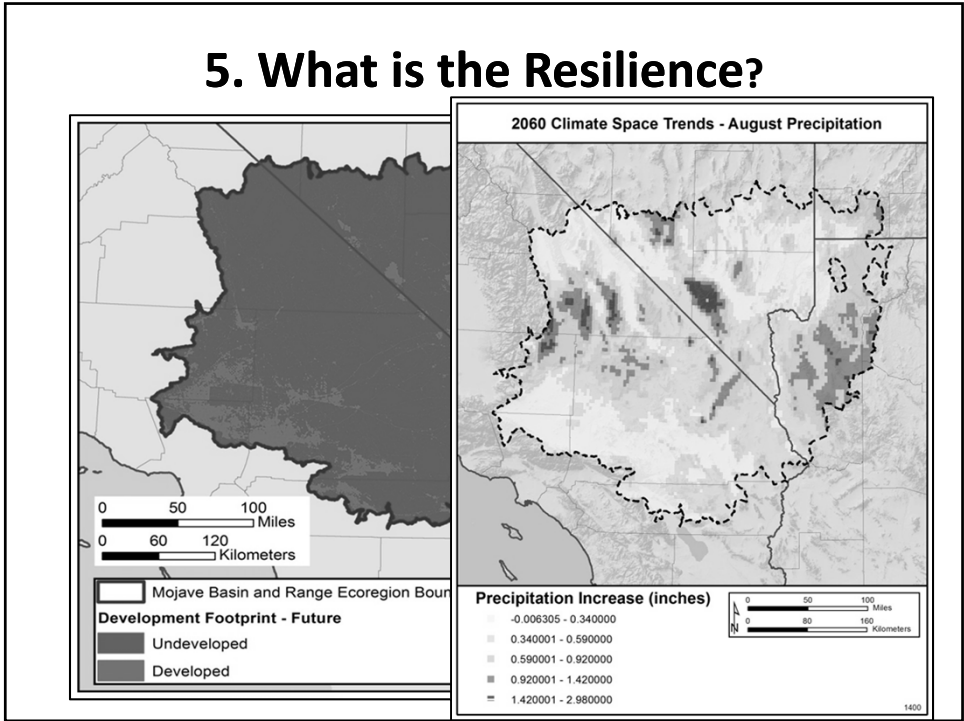


5. What is the Resilience?

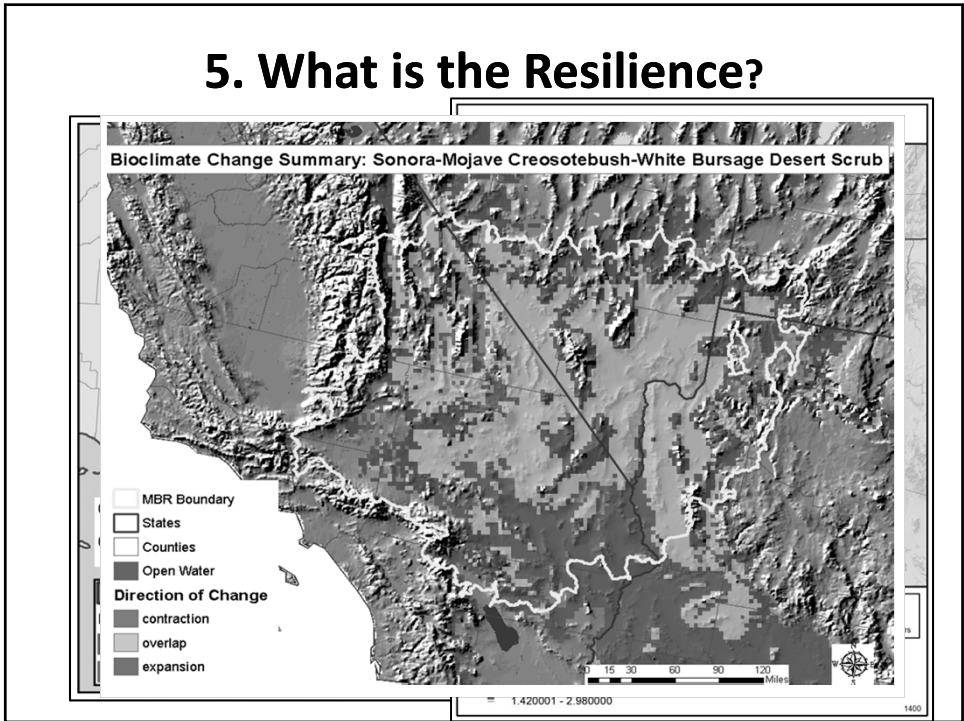
5. What is the Resilience?



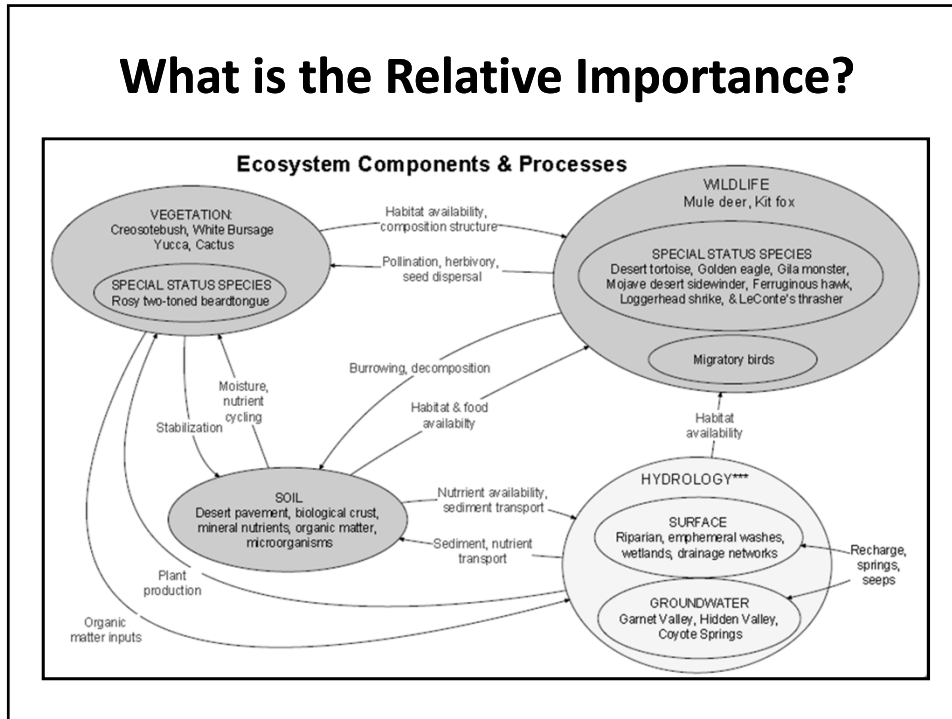
5. What is the Resilience?



5. What is the Resilience?

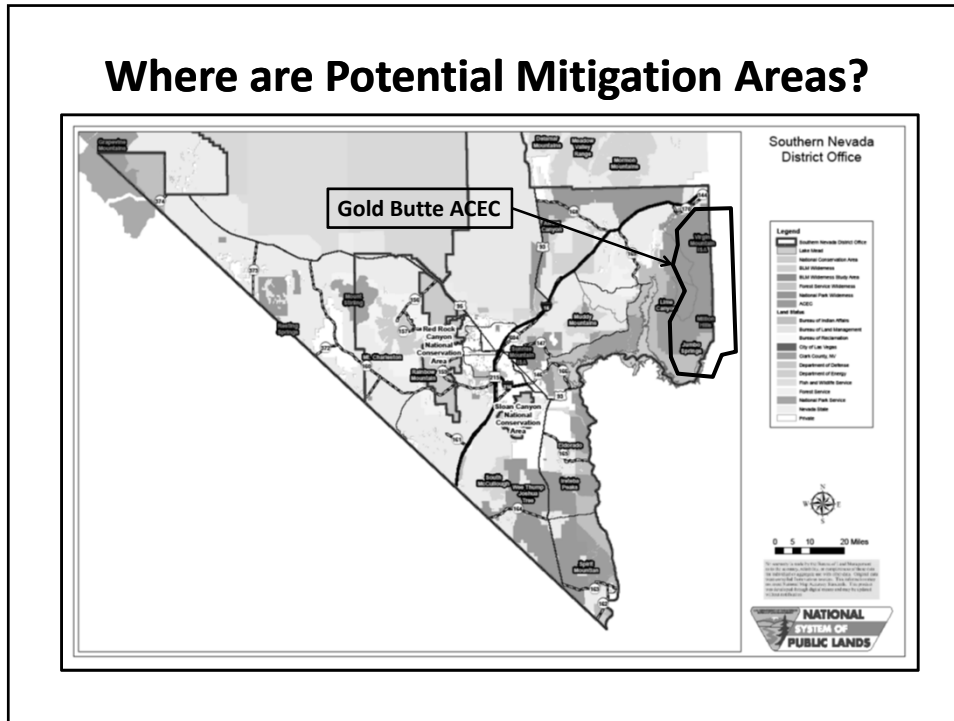


What is the Relative Importance?



Regional Mitigation Questions

1. What are the impacted resources?
2. What is the region (vegetation, wildlife, water)?
3. What is the current distribution?
4. What are the risks (change agents)?
5. What is the resilience in light of change?
6. What is the relative importance (rarity, to sustain ecosystem processes)?
7. **Where are potential mitigation areas?**
8. Were the actions effective (individually and collectively)?



Were the Actions Effective?

- **Monitoring and Adaptive Management**
 - Budget
 - Follow AIM Principles
 - BACI design
 - Common methods
 - Remote imagery
 - Multi-scale
 - Data management
 - Adapt as necessary

AIM-Monitoring:
A Component of the
BLM Assessment,
Inventory, and
Monitoring Strategy

Gold Butte ACEC Monitoring Locations

- 2011 AIM Plot
- Monitoring Plot
- Gold Butte ACEC
- BLM land

**Regional Context Information Sources
(not exclusive):**

- BLM Rapid Eco-regional Assessments (REAs)
- The Nature Conservancy Eco-Regional Assessments
- WGA Crucial Habitat Assessment Tool (CHAT)
- BLM Resource Management Plans (RMPs)
- Habitat Conservation Plans

**Regional Context Information Sources
(not exclusive):**

- Baseline status resources, e.g. surveys, inventories, occurrence records, studies/research
- Ethnographic studies
- Regional planning documents
- Regional social and economic studies

Links to Helpful Resources

- Rapid Ecoregional Assessments (REA)
 - http://www.blm.gov/wo/st/en/prog/more/Landscape_Approach/reas.html
- WGA Crucial Habitat Assessment Tool (CHAT)
 - <http://www.westgov.org/initiatives/wildlife/380-chat>
- Ecoregional Assessment Status Tool (EAST)
 - <http://east.tnc.org/>
- EPA Ecoregions
 - <http://www.epa.gov/wed/pages/ecoregions.htm>
- Assessment, Inventory, and Monitoring Strategy
 - http://www.blm.gov/wo/st/en/info/regulations/Instruction_Memos_and_Bulletins/national_information/2012/IB_2012-080.html