



M Street Live!

**Tribal Relations:
New Guidance**

1780 Manual

- Tribal Relations

Handbook 1780-1

- Improving and Sustaining Tribal Relations

**Learn about
tribal organization**

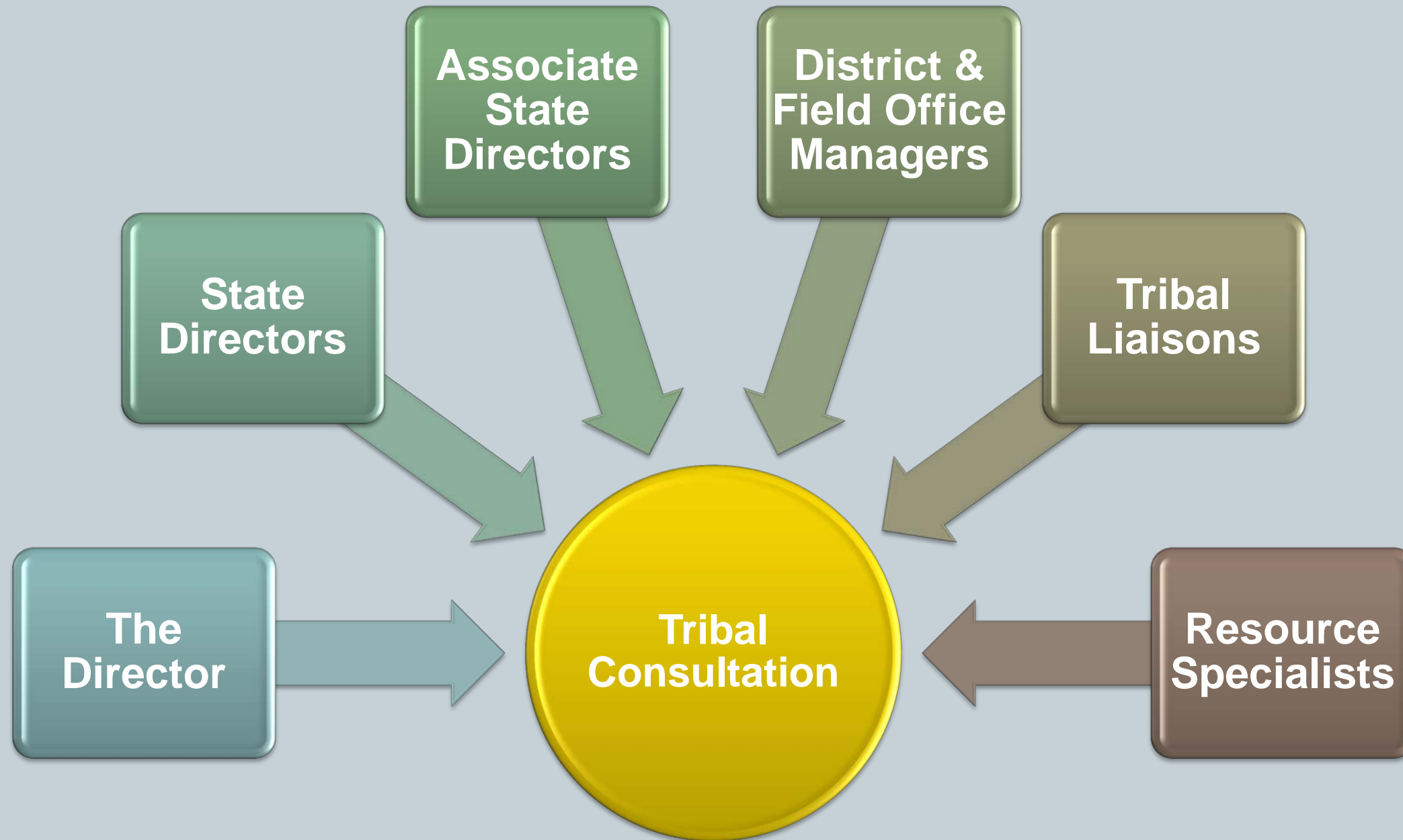
**Demonstrate respect
for tribal heritage
and worldview**

**Read ethnographic
histories**

**Build long-term
relationships based on
our common interest in
managing & protecting
lands & resources**



BLM representatives in consultation



Programs with responsibilities for tribal consultation

Cadastral survey

Cultural resources

Fire & aviation

Forestry

Lands & realty

Minerals

Planning & NEPA

Rangeland & plant conservation

Recreation

Renewable energy

Soil, water & air

Wildlife & fisheries

Wilderness



Statutes and legislation

NEPA

- National Environmental Policy Act

FLPMA

NHPA

Manual
19

Statutes and legislation

NEPA

- National Environmental Policy Act

FLPMA

- Federal Land Policy and Management Act

NEPA

NEPA Manual
09/1/19

Statutes and legislation

NEPA

- National Environmental Policy Act

FLPMA

- Federal Land Policy and Management Act

NHPA

- National Historic Preservation Act

Statutes and legislation

NEPA

- National Environmental Policy Act

FLPMA

- Federal Land Policy and Management Act

NHPA

- National Historic Preservation Act

BLM Manual
6341.19

- Management of BLM Wilderness

Statutes and legislation

AIRFA

- American Indian Religious Freedom Act

NAGPRA

- Native American Graves Protection and Repatriation Act

Executive Order 13175

- Consultation and Coordination with Indian Tribal Governments

Executive Order 13007

- Indian Sacred Sites

Indian tribes are
sovereign domestic
dependent nations



They are not
stakeholders,
municipalities,
state governments,
or the public

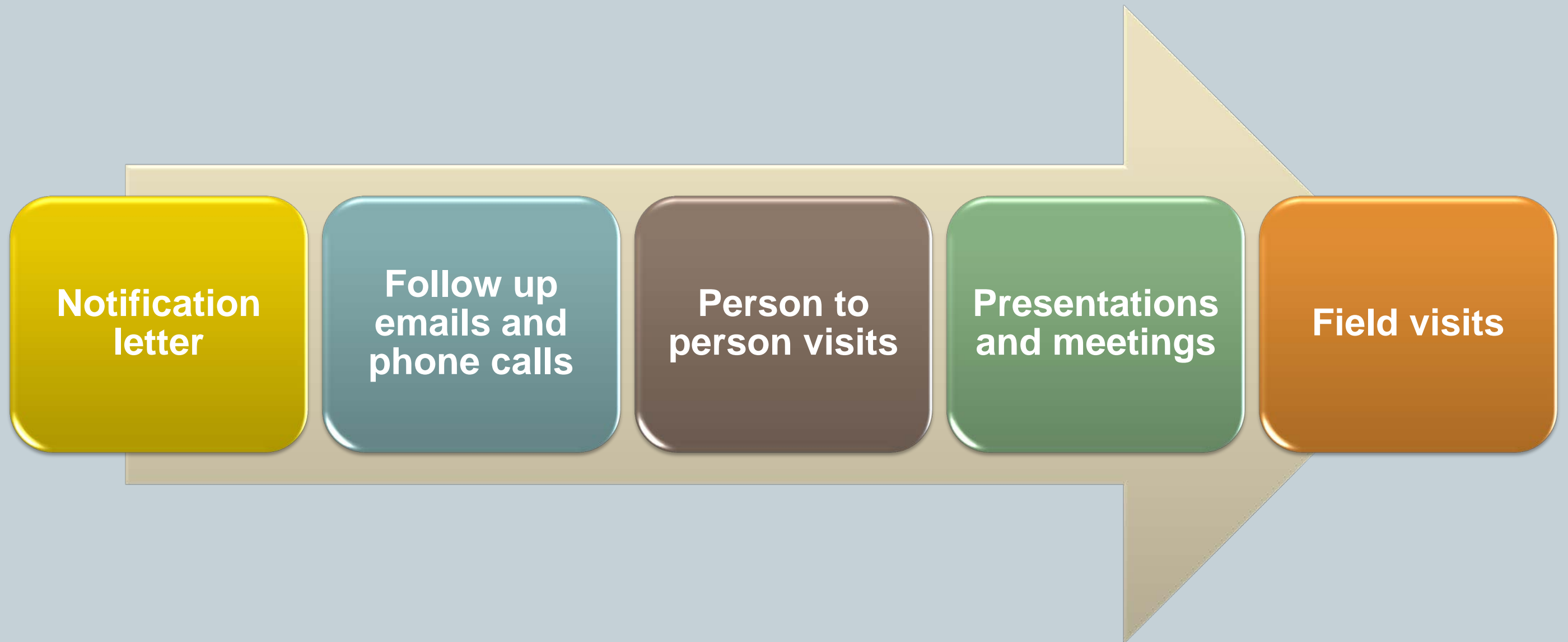


What is Consultation?

- Two-way communication between the agency and an American Indian or Alaska Native tribal government regarding proposed BLM actions
- The purpose is to obtain substantive tribal input and involvement in the decision making process
- Each tribe may have their own idea of what is meaningful consultation



Consultation efforts





Each tribe is unique!

The nature of the
interaction between
individual tribes
and the BLM
should be
mutually agreed

What are BLM's property-based trust responsibilities?

Indian minerals management

Cadastral survey of Indian properties

Potential effects of public land actions that extend onto tribal lands

On BLM-administered lands...

Land,
resources,
or property
on public
lands

Human
remains
and
cultural
items

Archaeo-
logical sites

**Are not
considered
Indian Trust
Assets**

Plants and
animals
important
to Indian
tribes

Traditional
cultural or
religious
places

Sacred
sites

Compensation to tribes

Managers may provide, or require that land use applicants provide, financial compensation to Indian tribes to help cover the costs for consulting with the BLM on land use planning and authorizations



Compensation to tribes

Appropriated funds or cost reimbursable accounts may be used to reimburse tribal elders or officials for travel expenses to attend meetings in connection with NEPA, FLPMA or the NHPA Section 106 process



What is in the handbook?



How to conduct and document consultation efforts



How to identify tribal leaders and their representatives



How to develop strategies to achieve success in our relations and G-to-G consultations



How to recognize tribal motivations driving consultations

Programs with responsibilities for tribal consultation

Cadastral survey

Cultural resources

Fire & aviation

Forestry

Lands & realty

Minerals

Planning & NEPA

Rangeland & plant conservation

Recreation

Renewable energy

Soil, water & air

Wildlife & fisheries

Wilderness

